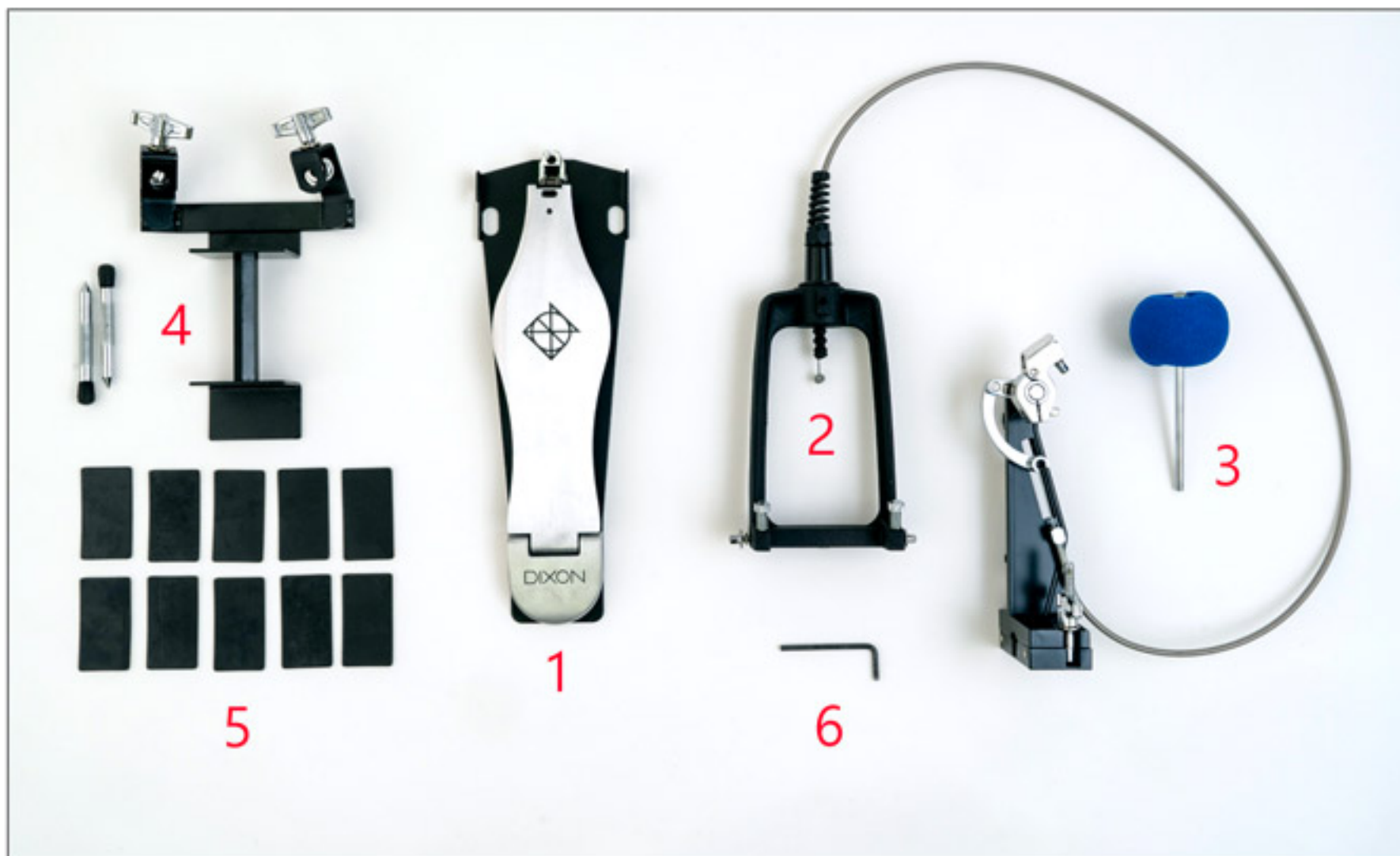




Features:

- Patented cable alignment system for maximum cable life
- Independent beater angle adjustment
- Solid beater base with adjustable spurs
- Beater post mounts to any tube size for endless performance options

Parts List:



	Part Name	Quantity
1	Pedal Plate	1
2	Remote Beater Post	1
3	Beater	1
4	Anchor Frame and Spurs	1
5	Rubber Guard	10
6	4mm Hex L-Rod	1

Before you begin:

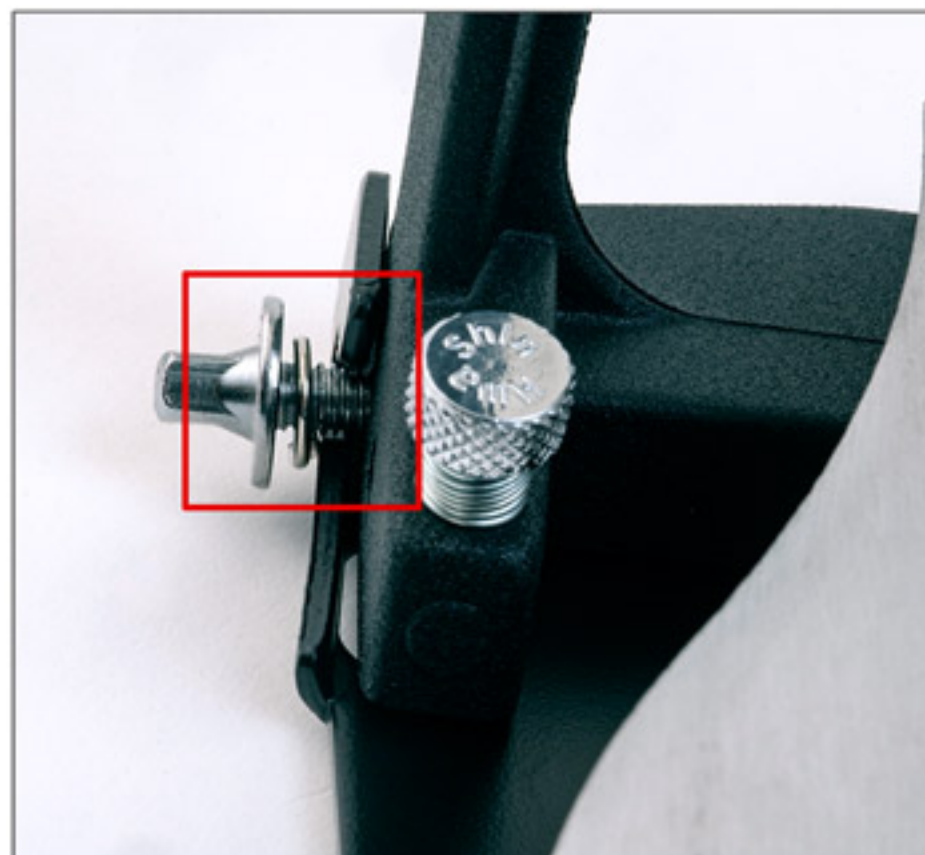
Inventory and inspect all parts from the list provided.

Remote Pedal and Beater Post Assembly:

Set remote pedal frame upright onto plate and secure with key head screws in slots.

Make sure the spring washer is in between the screw and pedal plate.

Make sure the spur is in the slots of base plate.





Remote Pedal and Beater Post Assembly:

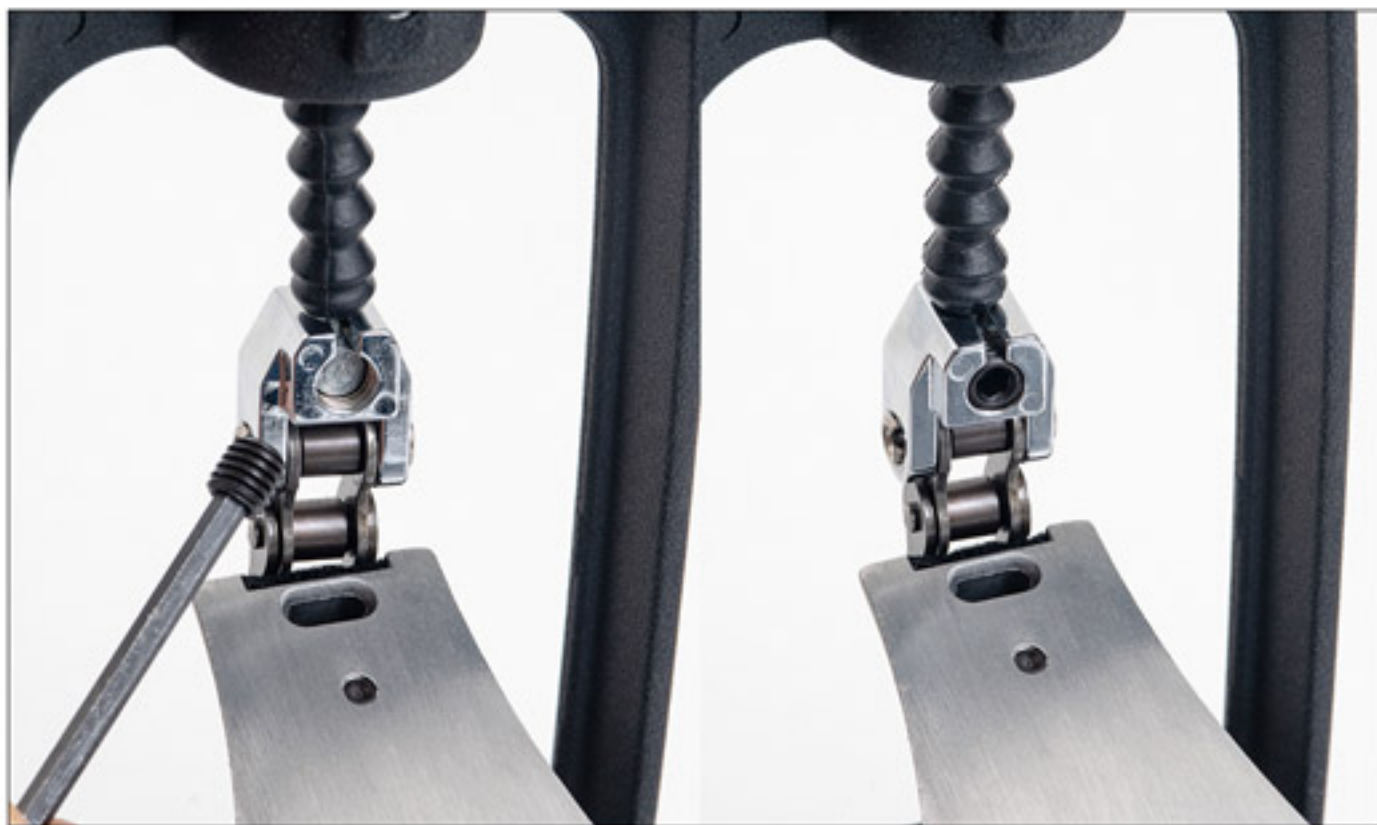
Loosen the screw inside the cable linkage slot with 4mm Hex L rod.



Insert the cable head into the cable linkage slot.



Relocate and tighten the screw in the slot.



Tighten chain linkage screw under the footboard.



Anchor Frame Assembly:

Choose a spur tip which best suits your floor surface, insert spurs into eyebolts and tighten wing nuts.





Apply rubber guards to the inside surfaces of the Cajon brake which make contact with the bottom and faceplate of the Cajon.



Layer multiple guards to build up the bottom surface of the brake to equal the height of the Cajon's rubber feet. The Cajon needs only to rest lightly on the brake surface to stabilize the Anchor Frame.



To Play Cajon:

Attach and center the beater post clamp to the middle span of the anchor frame. Make sure the clamp gap is evenly high applied to the span.

Place the Cajon's front bottom edge into the brake and position pedal. Always drape pedal cable along a direct and flowing path to play.



To Adjust Beater Angle:

Loosen the key head screw on the beater hub, adjust to desired angle and tighten to secure.





To Play Stand Mounted Percussion And Effects:

Attach the Beater Post to any stand, post or leg and position to strike a percussion instrument. The Beater Post Clamp adjusts to fit tube diameter's ranging from 10.5mm to 38.10mm.



Cable Maintenance:

Excessive bending twisting and stretching of the cable could impede the cable's action and shorten its life.

